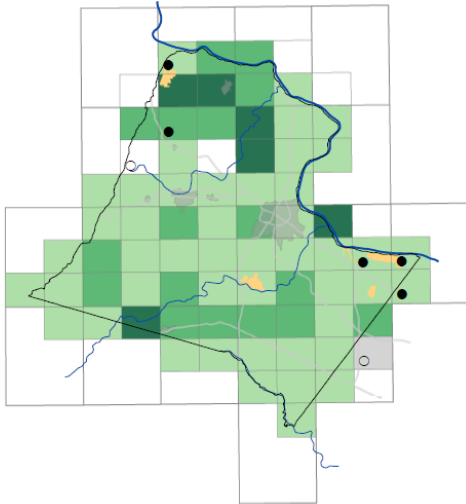


*Birds of Loudoun: A Guide Based on the
2009-2014 Loudoun County Bird Atlas*

Errata

1. Remove the words “and winter visitor” from the Occurrence line of the Brant account on page 10.
2. Add “occasional in summer” to the Occurrence line of the Pied-billed Grebe account on page 28.
3. Replace the Chimney Swift distribution map on page 37 with the following:



4. Change “Suddoth” to “Sudduth” on pages 155 (photo caption) and 202 (list of atlasers).
5. Add “Rexanne Bruno” to the list of volunteer atlasers on page 202. Our apologies for the oversight.