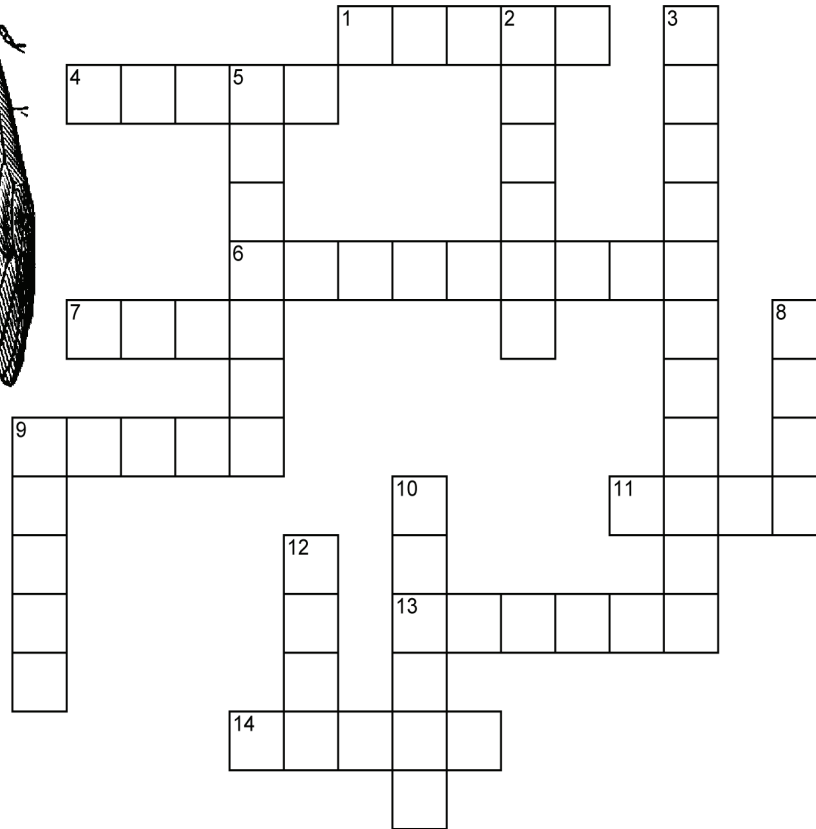
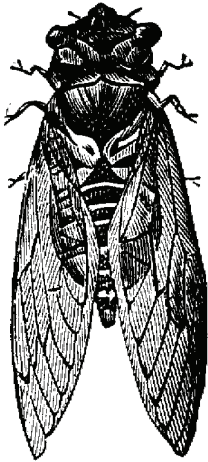


Cicadas



ACROSS

- 1 Cicadas are an important food source for this animal ____
- 4 The larval shell that we see left behind on tree trunks and fence posts is this color
- 6 Cicadas have special ____ on their abdomens which enable them to make their song
- 7 Only this gender of cicada sings
- 9 When they have reached maturity, cicadas emerge from the ground during this time of day ____
- 11 The cicada will live several ____ underground as it develops
- 13 The month in which we hear cicadas the most
- 14 Annual cicadas differ from Periodical cicadas in many ways but one way is that they have ____ colored eyes

DOWN

- 2 Annual cicadas are also called ____ cicadas indicating the months in which they live as adults
- 3 Cicada wings have this opacity
- 5 Cicadas like to sing during the ____ part of the day (temperature indication)
- 8 As the cicada develops under ground, it will ____ do this in order to grow
- 9 When cicadas hatch from their eggs they in the ____ stage
- 10 The adult female cicada will lay her eggs in a slit in this part of a tree
- 12 After hatching, they burrow into the ____ in search of tree roots

Cicadas

Solution:



To learn more about cicadas or to get clues to the puzzle, visit our website and click on Habitat Herald Archives in the navigation bar. Use the drop-down menus to locate the article that corresponds to this topic:

Habitat Herald, Vol XIII, Issue 2, Cicadas, *Tibecaen canicularis*

Habitat Herald, Vol IX, Issue 2, Brood X: The Cicadas are Back